

# Take your command line skills to the next level with GitHub Copilot in the CLI 🚀



Kedasha Kerr | @itsthatladydev  
Developer Advocate | GitHub

UNIVERSE23

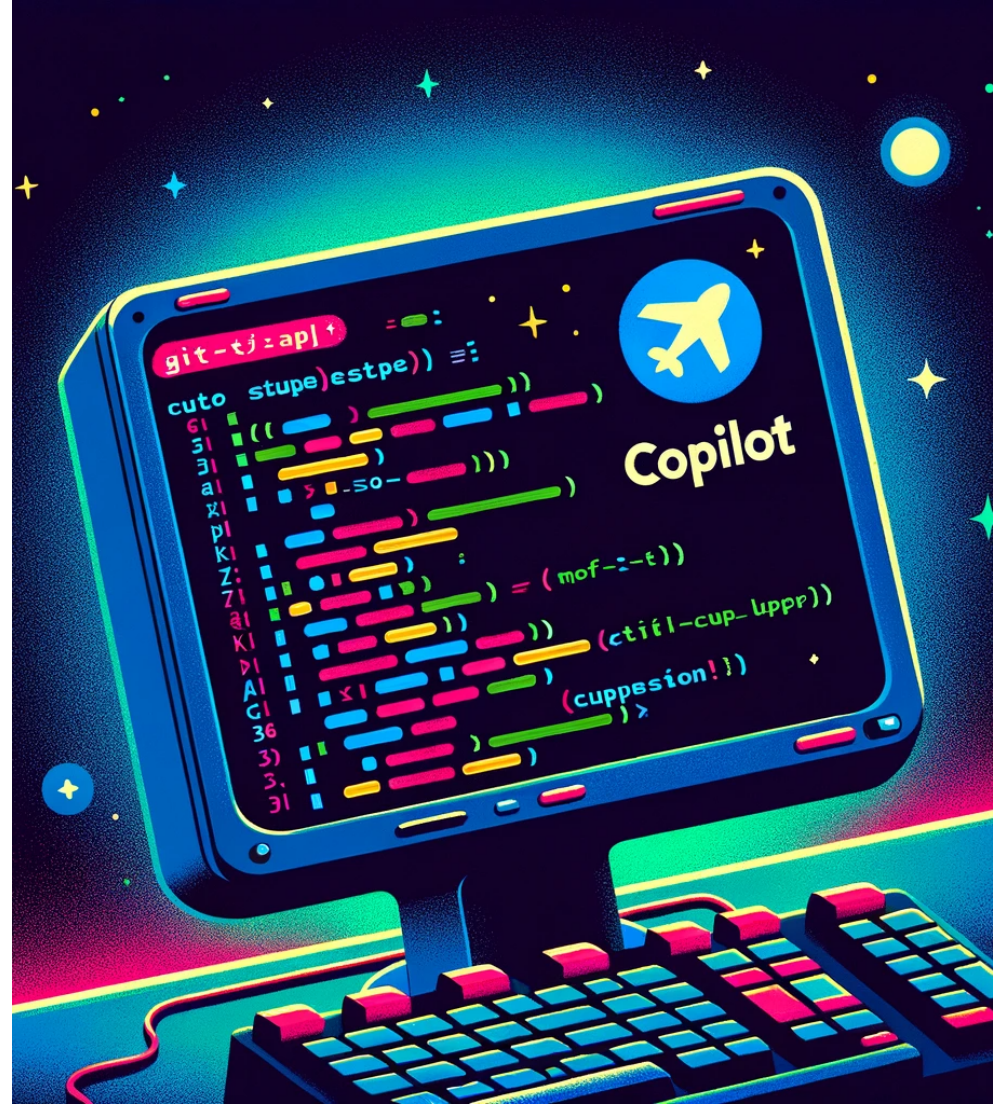
# Hey, I'm Kedasha! 🙋‍♀️

- Developer Advocate at GitHub 🐙 🗨️
- Software Dev for ~4 years
- Technical Content Creator
- Find me online [@itsthatladydev](#) 🎥



# What we'll cover:

- What is Github Copilot in the CLI?
- How to install and use it? 🤔
- My Hot Tip 💡 for using Copilot in the CLI
- Lots and lots of live demos 🦄
- Give me a suggestion! 👁️
- Q&A + Wrapup ?



# What is Copilot in the CLI?

GitHub Copilot in the CLI provides a chat-like interface in the terminal that allows you to ask questions about the command line.



# What does it do?

GitHub Copilot in the CLI is designed to answer questions about:

- general shell commands
- git commands
- *gh* cli commands

Public Beta

## GitHub Copilot, now in the terminal

```
$ gh copilot suggest -t shell "How do I find all the files bigger  
Welcome to Copilot CLI!  
I'm powered by AI, so surprises and mistakes are possible. Make s  
suggestions, and share feedback so that we can learn and improve.  
Suggested command  
  find . -size +128k  
? Select an option  
> Explain command  
Explanation  
  find is used to list files.  
  . specifies that we search in the current directory.  
  -size +128k specifies that we only want files larger than 128  
? Select an option [Use arrows to move, type to filter]
```

# Installation

💡 You must have an active copilot subscription

- ❶ install GitHub CLI with your package manager
- ❷ authenticate in OAuth browser window
- ❸ install gh-copilot cli extension

```
1 brew install gh
2 gh auth login
3 gh extension install github/gh-copilot
```



# Tip: Create an alias

create your own alias for gh copilot commands

I'm using zsh so I ran:

```
1 alias copilot='gh copilot' ; echo 'alias copilot="gh copilot"' >> ~/.zshrc && source ~/.zshrc
2 alias gcs='gh copilot suggest' ^
3 alias gce='gh copilot explain' ^
```

# How do you use it? 🤔

To begin, run the help command `gh copilot --help` :

```
1  gh copilot
2
3  Your AI command line copilot.
4
5  Usage:
6  copilot [command]
7
8  explain    Explain a command
9  suggest    Suggest a command
10
11  Flags:
12  -h, --help    help for copilot
13  -v, --version  version for copilot
14
15  Use "copilot [command] --help" for more information about a command.
```



# Copilot CLI Commands

there are two commands you can use with the *gh* copilot cli extension:

```
1 gh copilot explain  
2 gh copilot suggest
```

# Explain Command

this command is used to explain any shell, git or gh cli command:

```
1 gh copilot explain 'your query command in a string'  
2  
3 Example: gh copilot explain 'git lfs migrate import --everything --include="*.gz,*.png,*.jar"'
```

You can also follow the on screen prompts if you run this command:

```
1 gh copilot explain
```

💡 the command you want to be explained must be in a string

# Suggest Command

this command is used to get suggestions for any shell, git or gh cli inquiry:

```
1 gh copilot suggest 'what you want to do' -t <git|gh|shell>
2
3 Example: gh copilot suggest 'create a new codespace' -t gh
```

you can also run:

```
1 gh copilot suggest
```

and follow the on screen prompts



**ok that was a lot of talking...**

let's get into some demos 🐎



# Push a local folder to a new GitHub repo

We can create a GitHub repo with the cli

```
1 gh copilot suggest 'push a local folder to a github repo'
```

# Explain a dangerous command ⚠️

We can ask copilot cli to explain commands that appears simple enough, but are actually dangerous

```
1 gh copilot explain chmod -r 777 /
```

🚫 NEVER RUN THIS COMMAND ON YOUR MACHINE 🚫

# Remove a file from a commit msg and keep the original commit msg 🤔

ever commit a file you didn't mean to add?

```
1 gh copilot suggest 'remove mistake.md from last commit keeping original commit message'
```

# Download a Youtube Video 🤔

Did you know that you can download youtube videos with the cli?

```
1  github copilot suggest 'download youtube video'
```



How does Copilot in the CLI work? 🤔



# Behind Copilot in the CLI 🙄🙄

THREAD: CONVERSATION BETWEEN YOU AND COPILOT

TURN: A SINGLE USER MESSAGE IN A THREAD

- ➊ User Input Prompt
- ➋ LLM Analysis
- ➌ Response Generation
- ➍ Output Formatting

# Top Questions about using the Terminal

...answered by copilot in the CLI

# ? delete a git branch locally and remotely ?

```
1 gh copilot suggest 'delete a git branch locally and remotely'
```

# ? check if a directory exists in shell script ?

```
1 git copilot suggest 'check if dir exist in shell script'
```

# ? see hidden files in current directory ?

```
1 gh copilot suggest 'see hidden files in current directory'
```

# ? exit vim ?

```
1 gh copilot suggest 'how to exit vim'
```

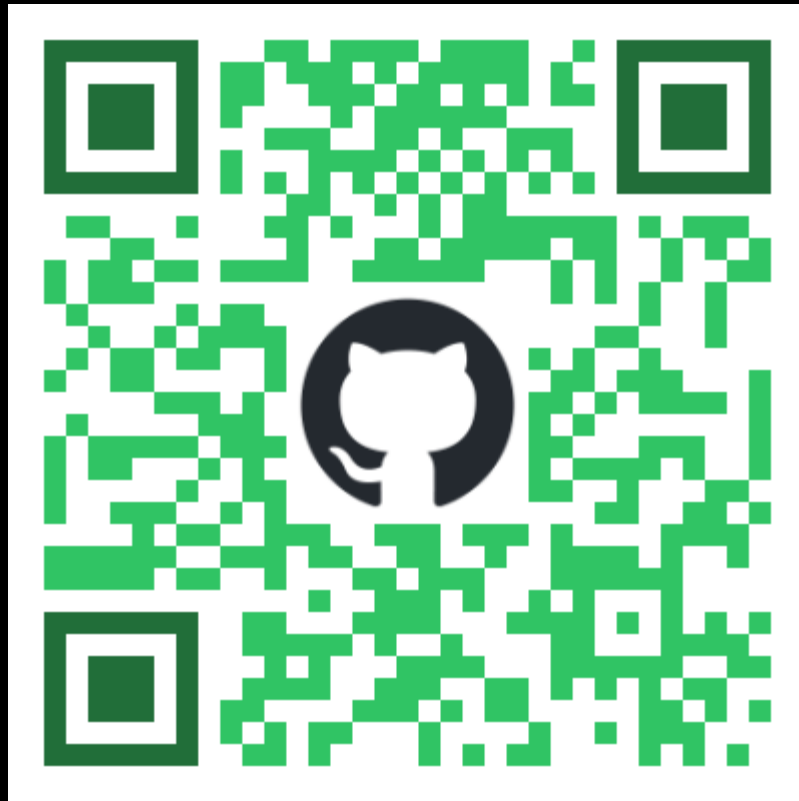
# ? give me a suggestion ?

What would you like me to ask?

```
1 gh copilot suggest/explain ??
```



✨ Try it for yourself! ✨



**Find me online:  
@itsthatladydev**